

# Timer Belt Actuator

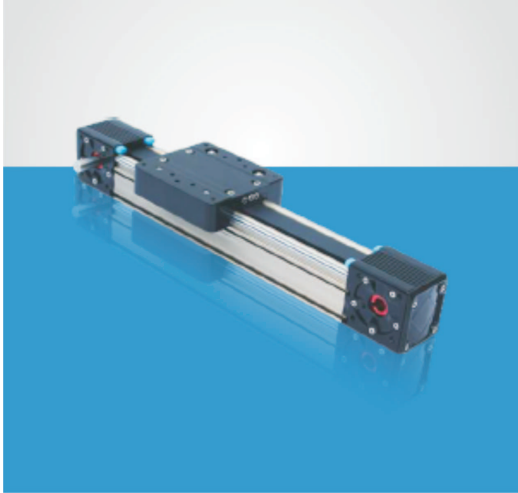
## Square Automation

Contact : + 91 965733 2859 (Pune, MH)  
+ 91 98501 72779

Email : [square.automation@gmail.com](mailto:square.automation@gmail.com)

Web : [www.square-automation.net](http://www.square-automation.net)

## SQ-60HA



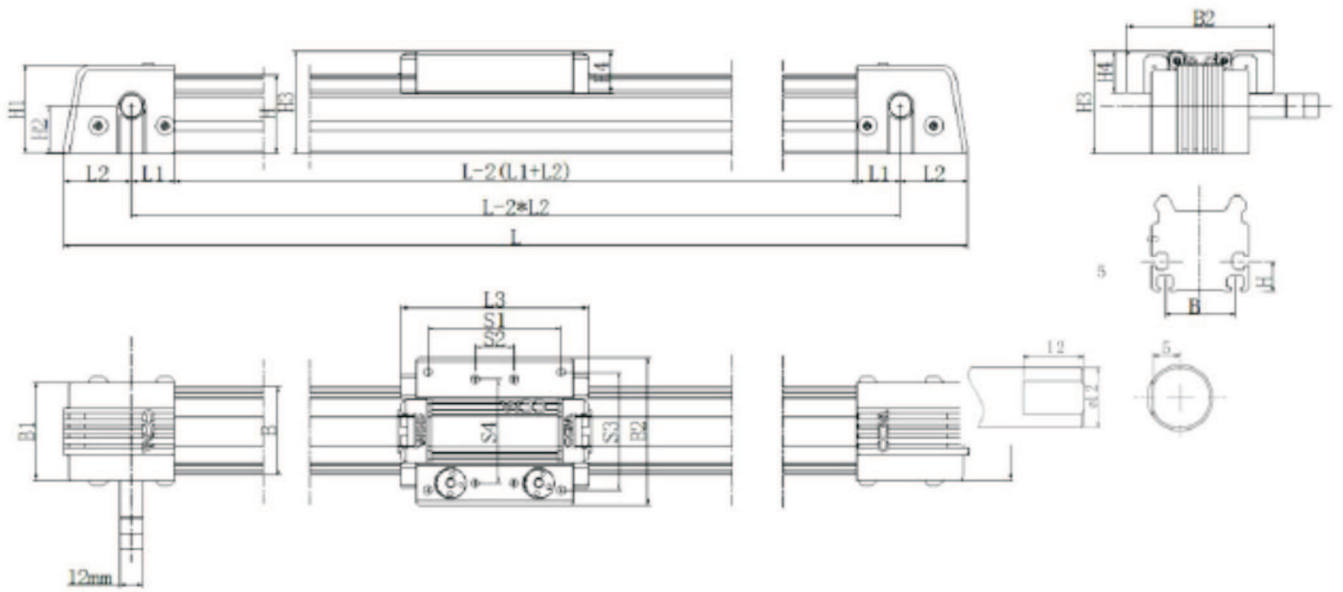
### Features

- Driven by high quality Timer Belt, good repeatability and long lifetime
  - New style shaft tip structure to prevent screw from loosening, very suitable for high speed reciprocating motion
  - Adopt high precision linear slider guide, smooth motion and heavy load capacity, suitable for single axis heavy duty or multi-axis combination use
  - Step motor and ball screw connected with high quality elastic coupler to get low noise Synchronous transmission
  - Equipped with adjusting pulley, easy for debugging
- Zero position switch and limit switch at both ends for accurate positioning and protecting the product itself
  - The base has threaded holes and thru holes, easy for installation
  - Servo-motor can be installed for industrial application

### Technical Parameters

1	Model	SQ-60HA
2	Guide Width	60 x 60 mm
3	Load Capacity	30 Kg
4	Pitch	125 mm
5	Stroke Length	Up to 3 mtr
6	Moment load	15 Nm
7	Linear Accuracy	0.1 mm
8	Position Repeatability	0.05 mm
9	Material	Aluminum Profile
10	Weight	5 Kg

# Mechanical dimension



Length(mm)			Width(mm)			Height(mm)				Carriage Screw				Profile Body Nut Groove		Tailstock Screw		Applicable Motor			
L1	L2	L3	B	B1	B2	H	H1	H2	H3	H4	S1	S2	S3	S4	Thread	H5	B5	Square Nut	Reference Circle	Screw	
22	35	95	45	50	75	40	46	24	52	22	68	20	60	53	M5	14	32	M5	-	-	Nema17/23 Stepper 200W Servo

Stroke Length =  $L - 2 * (L1 + L2) - L3$

# Example

