

IMPACTER

By Square Automation



The World of Motion
driven by Innovation

Servo Cylinder

The electric cylinder is an automation product that converts the rotary motion into linear motion.

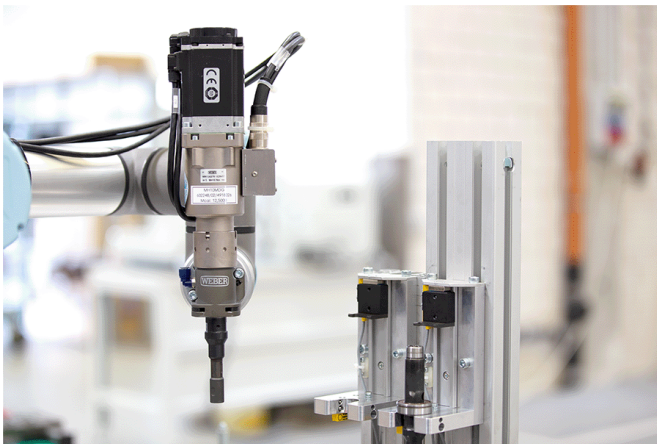
Various types of motors (such as Servo motor, Stepper motor, Brush motor, Brushless motor) as used to drive different types of screw (or nut) to rotate and pass between components.

Best benefit the features of servo control systems which include precise speed control, precise torque control will be converted into precise force control, precise speed control and precise position control of electric cylinder, it's revolutionary product for high-precision linear motion.



Advantages of Servo Cylinder

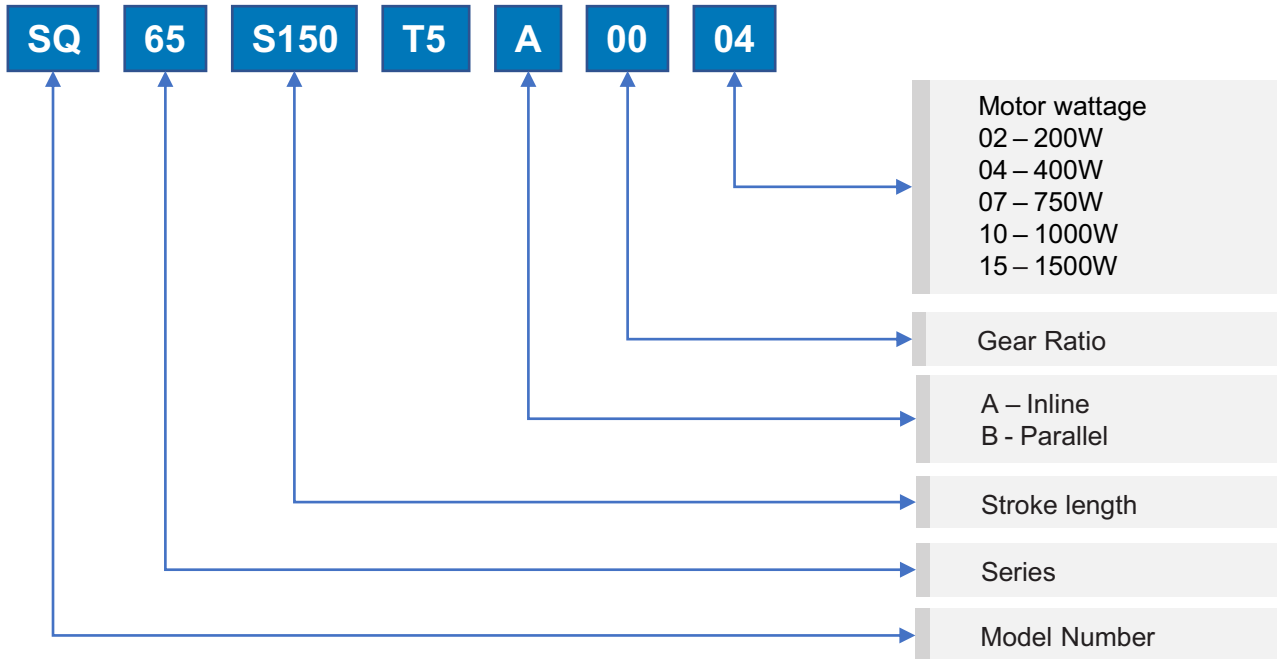
- A pair of high strength bearing built in to ensure same push and pull force
- Excellent lubrication, ambient environment temperature -10 ~ 80 deg
- High quality seal on both ends of cylinder for better performance
- Built in Stroke Limit Sensor.



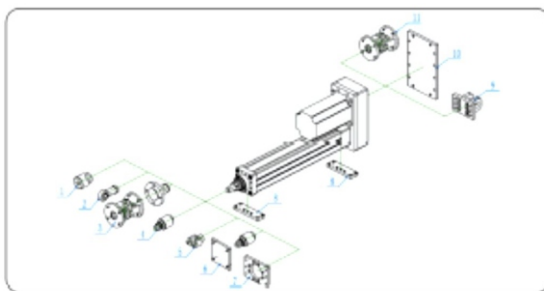
Applications

- Aerospace, military industry.
- Medical health, electronic information technology industry.
- Industrial robots, Production automation, NC machine tool manufacturing industry.
- Medical health, electronic information technology industry.

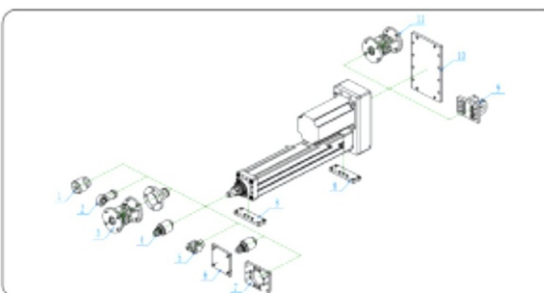
Model Number



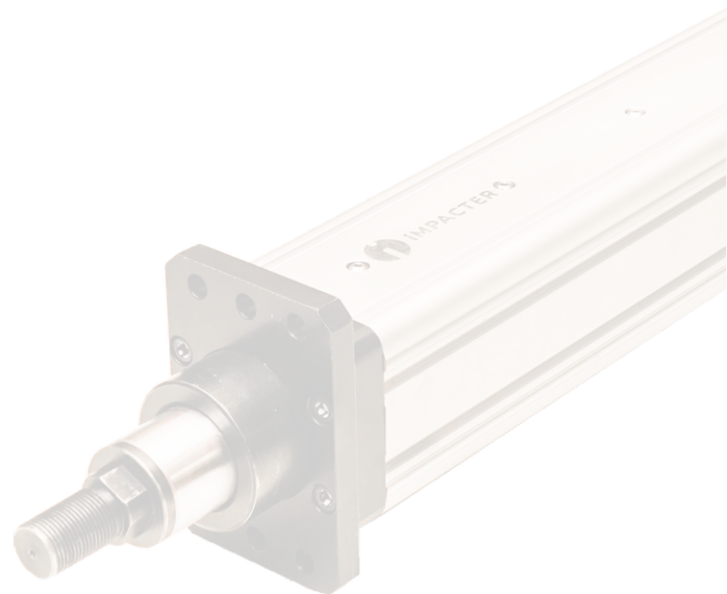
Mounting Parts



1. female-threaded rod top
2. spherical joint bearing
3. front universal joint
4. floating terminal
5. rod clevis
6. floating terminal with flange
7. front flange
8. side tapped mounting
9. rear clevis
10. rear flange
11. rear universal joint



1. female-threaded rod top
2. spherical joint bearing
3. front universal joint
4. floating terminal
5. rod clevis
6. floating terminal with flange
7. front flange
8. side tapped mounting
9. rear clevis
10. rear flange
11. rear universal joint



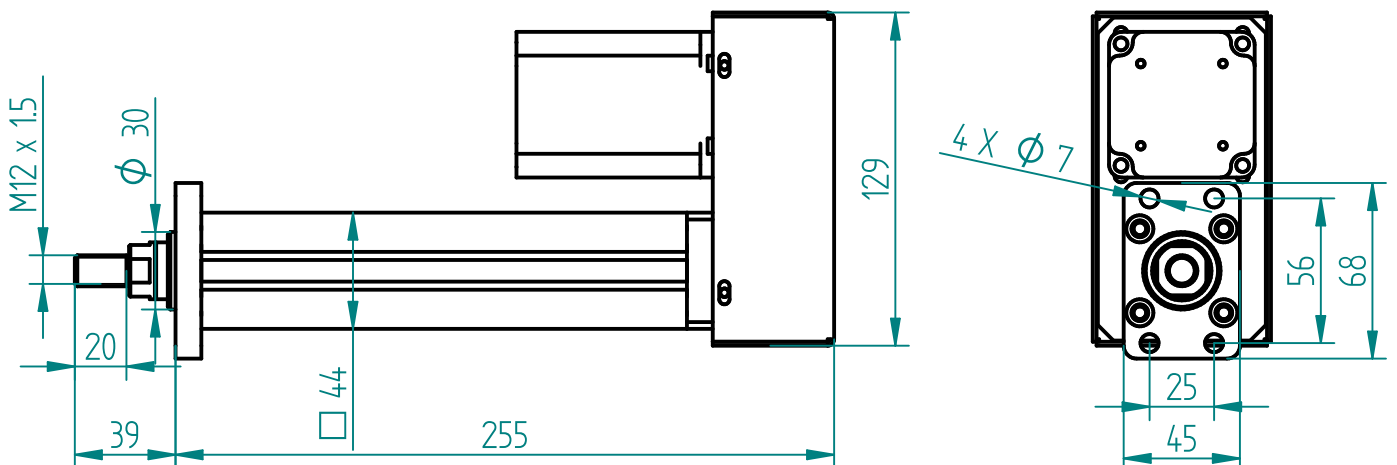
Servo Cylinder - SQ-44

Technical specifications

| Specifications | Description |
|-----------------------------|-------------|
| Model Number | SQ -44 |
| Screw Lead (mm) | 4 |
| Max motor power (W) | 400 |
| Max rated force (N) | 500 |
| Max rated speed (mm/sec) | 100 |
| Max Ballscrew diameter (mm) | 12 |
| Max stroke (mm) | 500 |
| Accuracy (mm) | 0.1 |
| Repeatability (mm) | 0.01 |



Mechanical dimensions



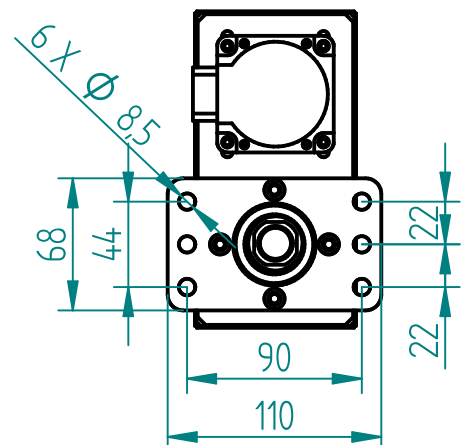
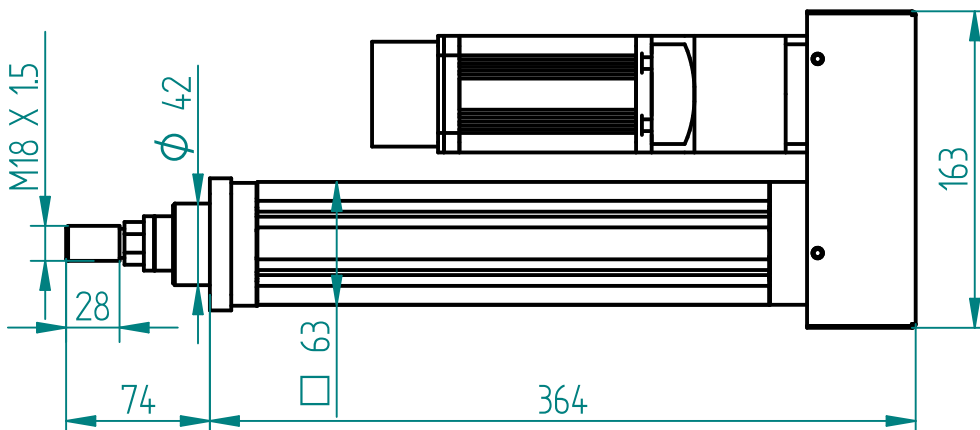
Servo Cylinder - SQ-65

Technical specifications

| Specifications | Description | |
|-----------------------------|-------------|------|
| Model Number | SQ -65 | |
| Screw Lead (mm) | 5 | 10 |
| Max motor power (W) | 750 | 750 |
| Max rated force (N) | 2500 | 2500 |
| Max rated speed (mm/sec) | 250 | 500 |
| Max Ballscrew diameter (mm) | 16 | 16 |
| Max stroke (mm) | 500 | 500 |
| Accuracy (mm) | 0.1 | 0.1 |
| Repeatability (mm) | 0.01 | 0.01 |



Mechanical dimensions



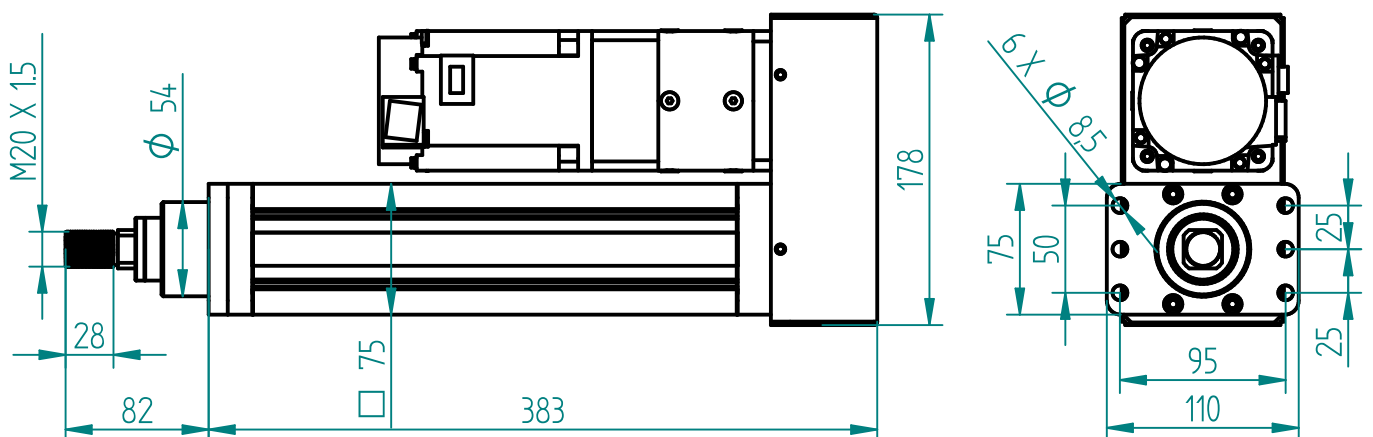
Servo Cylinder - SQ-75

Technical specifications

| Specifications | Description | |
|-----------------------------|-------------|-------|
| Model Number | SQ-75 | |
| Screw Lead (mm) | 5 | 10 |
| Max motor power (W) | 750 | 750 |
| Max rated force (N) | 10000 | 10000 |
| Max rated speed (mm/sec) | 250 | 500 |
| Max Ballscrew diameter (mm) | 20 | 20 |
| Max stroke (mm) | 800 | 800 |
| Accuracy (mm) | 0.1 | 0.1 |
| Repeatability (mm) | 0.01 | 0.01 |



Mechanical dimensions



Servo Cylinder - SQ-95

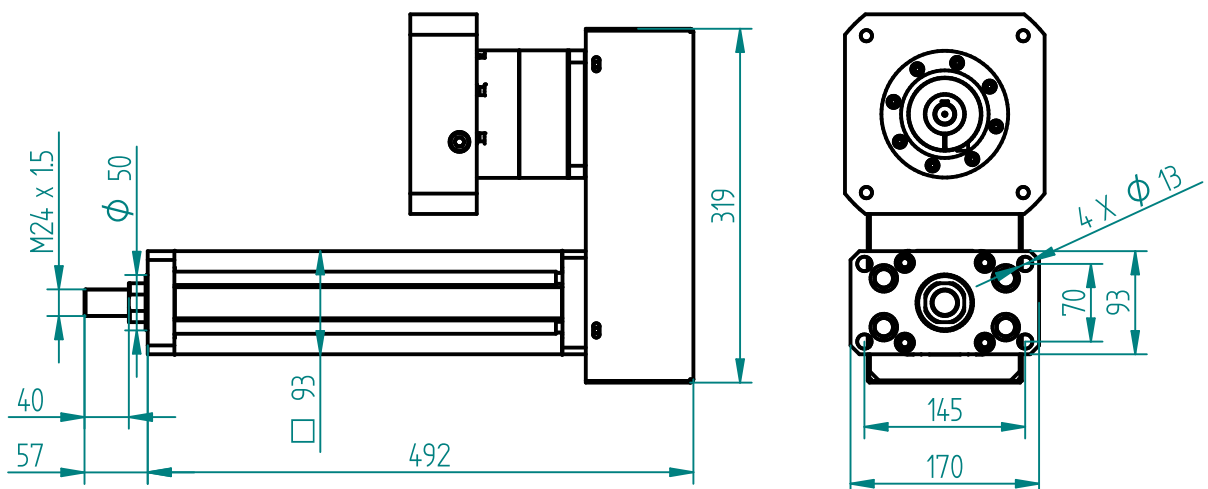
Technical specifications

| Specifications | Description | |
|----------------|-------------|--|
|----------------|-------------|--|

| | | |
|-----------------------------|-------|-------|
| Model Number | SQ-95 | |
| Screw Lead (mm) | 5 | 10 |
| Max motor power (W) | 1500 | 2000 |
| Max rated force (N) | 20000 | 20000 |
| Max rated speed (mm/sec) | 80 | 100 |
| Max Ballscrew diameter (mm) | 40 | 40 |
| Max stroke (mm) | 800 | 800 |
| Accuracy (mm) | 0.1 | 0.1 |
| Repeatability (mm) | 0.01 | 0.01 |



Mechanical dimensions



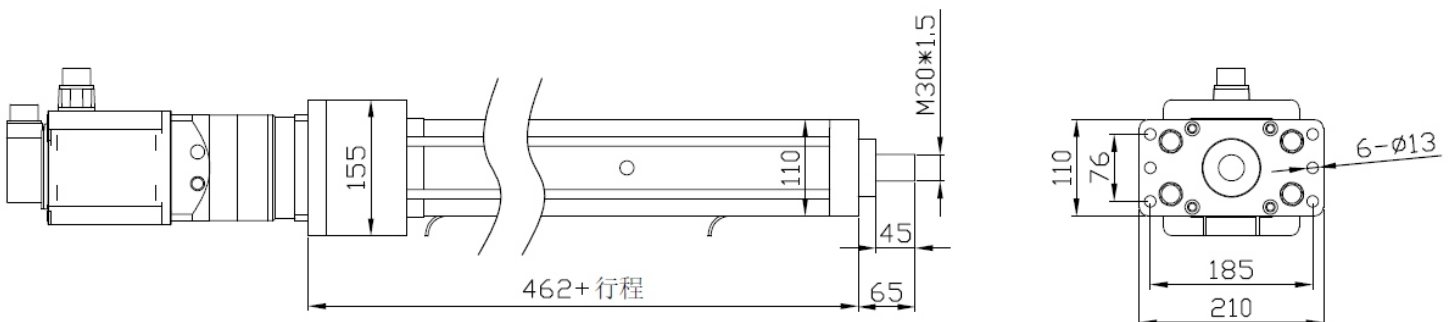
Servo Cylinder - SQ-110

Technical specifications

| Specifications | Description | |
|-----------------------------|-------------|-------|
| Model Number | SQ-110 | |
| Screw Lead (mm) | 10 | 20 |
| Max motor power (W) | 2000 | 2000 |
| Max rated force (N) | 30000 | 30000 |
| Max rated speed (mm/sec) | 60 | 100 |
| Max Ballscrew diameter (mm) | 40/55 | 40/55 |
| Max stroke (mm) | 1200 | 1200 |
| Accuracy (mm) | 0.1 | 0.1 |
| Repeatability (mm) | 0.01 | 0.01 |



Mechanical dimensions



Servo Cylinder - SQ-135

Technical specifications

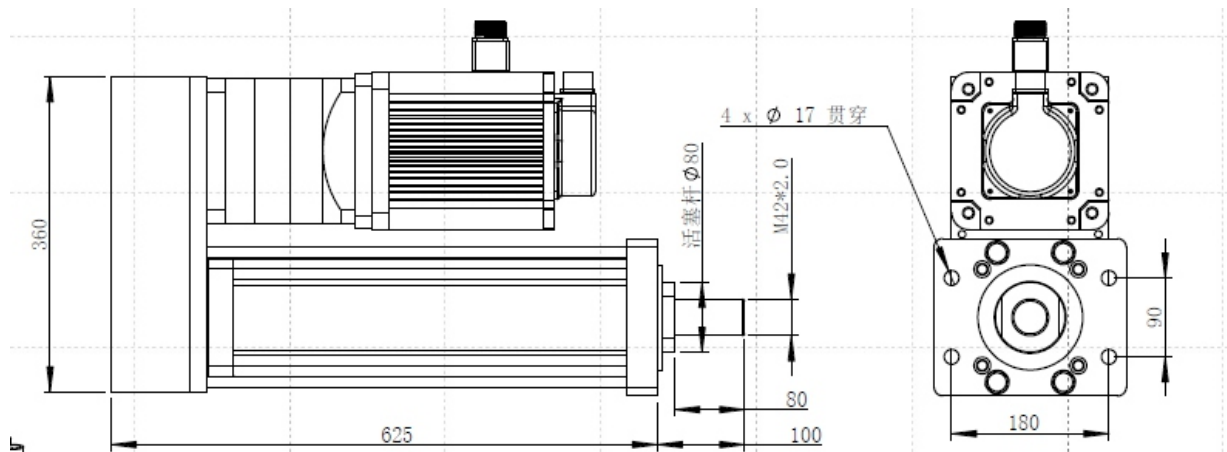
Specifications

Description

| | | |
|-----------------------------|--------|-------|
| Model Number | SQ-135 | |
| Screw Lead (mm) | 10 | 20 |
| Max motor power (W) | 4500 | 7000 |
| Max rated force (N) | 60000 | 60000 |
| Max rated speed (mm/sec) | 65 | 100 |
| Max Ballscrew diameter (mm) | 65 | 65 |
| Max stroke (mm) | 1200 | 1200 |
| Accuracy (mm) | 0.1 | 0.1 |
| Repeatability (mm) | 0.01 | 0.01 |



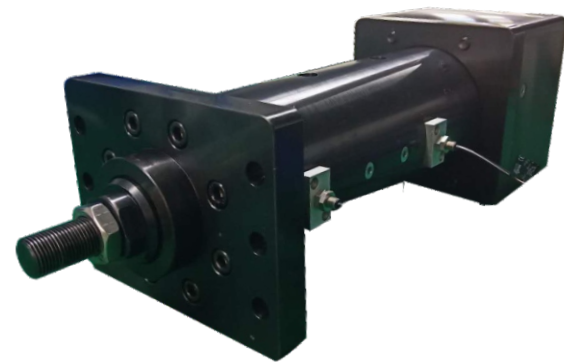
Mechanical dimensions



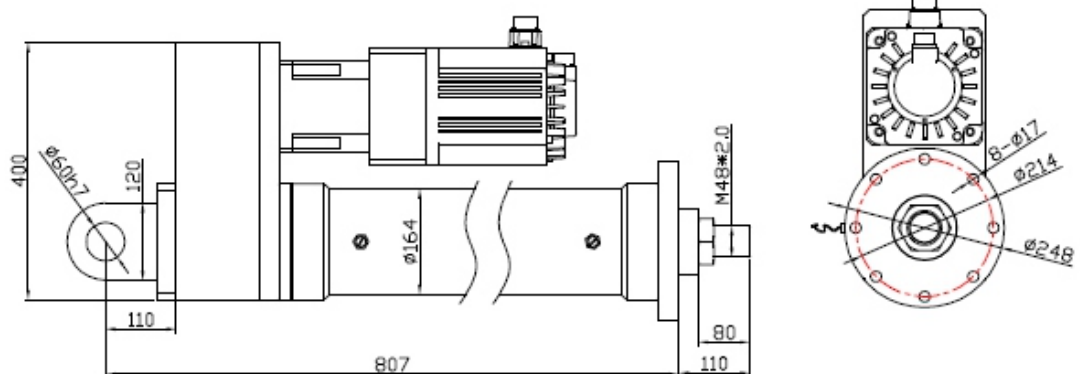
Servo Cylinder - SQ-180

Technical specifications

| Specifications | Description | |
|-----------------------------|-------------|--------|
| Model Number | SQ-180 | |
| Screw Lead (mm) | 10 | 20 |
| Max motor power (W) | 5500 | 15000 |
| Max rated force (N) | 90000 | 100000 |
| Max rated speed (mm/sec) | 50 | 100 |
| Max Ballscrew diameter (mm) | 80 | 80 |
| Max stroke (mm) | 1200 | 1200 |
| Accuracy (mm) | 0.1 | 0.1 |
| Repeatability (mm) | 0.01 | 0.01 |



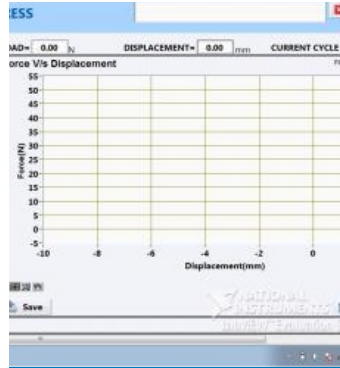
Mechanical dimensions



Servo Cylinder Application



Servo Press



Servo Press Software



Servo Press



Durability Testing



Durability Application



Heat Stacking SPM



Bearing Pressing Automation



Testing Application





SQUARE AUTOMATION

Corporate Office : Yashada Industrial Estate, Unit No 108 + 109 Narhe-Ambegaon Road, Pune - 411041

Manufacturing Unit : Dangat Industrial Estate, 81/2, NDA Rd, Shivane, Pune 411023, Maharashtra, India

info@squareautomation.co.in | www.squareautomation.co.in | 94225 48391 | 95617 90479