

G+ GP PLANETARY REDUCER

Compact Design, Light Weight, High Loading, Long Life
Stable Operation, Low Noise, High Output Torque, High Gear Ratio

GPF / GPFR Series



- Output Torque : 9 Nm to 210 Nm
- Size : 60 / 90 / 120
- Single Stage L1 Ratio : 3 / 4 / 5 / 7 / 10
- Double Stage L2 Ratio : 12 / 15 / 16 / 20 / 25 / 28 / 30 / 35 / 40 / 50 / 70 / 100

GPB / GPBR Series



- Output Torque : 14 Nm to 2000 Nm
- Size : 42 / 60 / 90 / 115 / 142 / 180 / 220
- Single Stage L1 Ratio : 3 / 4 / 5 / 6 / 7 / 8 / 10
- Double Stage L2 Ratio : 15 / 20 / 25 / 30 / 35 / 40 / 50 / 60 / 70 / 80 / 100

GPD / GPDR Series



- Output Torque : 14 Nm to 2000 Nm
- Size : 47 / 64 / 90 / 110 / 140 / 200 / 255
- Single Stage L1 Ratio : 4 / 5 / 7 / 8 / 10
- Double Stage L2 Ratio : 20 / 25 / 35 / 40 / 50 / 70 / 100

GPL / GPLR Series



- Output Torque : 9 Nm to 210 Nm
- Size : 47 / 64 / 90 / 120
- Single Stage L1 Ratio : 4 / 5 / 7 / 10
- Double Stage L2 Ratio : 12 / 15 / 16 / 20 / 25 / 28 / 30 / 35 / 40 / 50 / 70 / 100



"The World of Motion, Driven by Innovation"

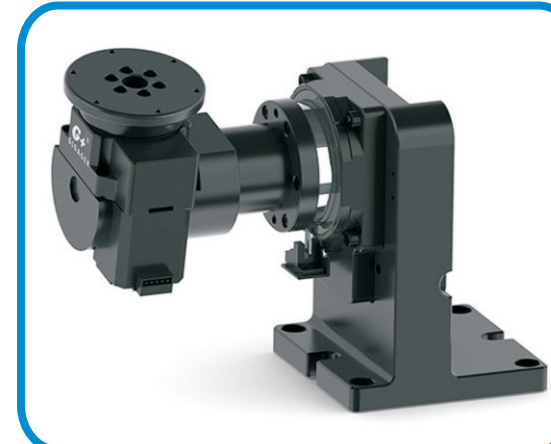
Right Angle Hollow Rotary Table



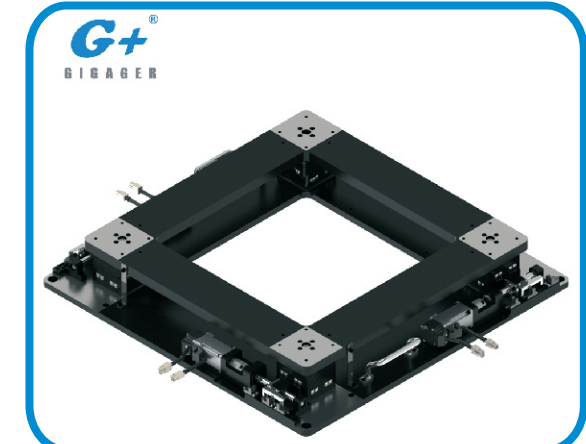
Hollow Rotary Table



Combination Case



Precision Micro XXY Stage



Servo Gearbox



Harmonic Gearbox



81/2, 1st Flr/, NDA Rd., Behind Ramalex Company, Shivane Industrial Estate,
Pune - 411 023. Mob : + 91 965733 2859
E : square.automation@gmail.com W : www.square-automation.net

Hollow Rotary Table



Features

- Accurate Helical Gear Driven
- Higher Precision, Higher Torque
- Higher Reduction Ratio, Higher Inertia Control
- Ease to use with Servo Motor & Stepper Motor

GSB Series

GSB Series is a most economical hollow rotary table series. It combines with helical flex gear with taper roller bearing

Type	GSB60	GSB100	GSB130	GSB200
Gear Ratio	5/15/20/25/35/50	8/24/32/40/56/80	10/30/40/50/70/100	10/30/40/50/70/100
Torque (Nm)	5.3	20	48	65
Axial Load (N)	100	200	250	800
Repeatability (arc-sec)	±5	±5	±5	±5
Flatness (mm)	±0.005	±0.005	±0.005	±0.005
Concentricity (mm)	±0.01	±0.01	±0.01	±0.01
Accuracy (arc-sec)	±10	±10	±10	±10
Backlash (arc-min)	<1	<1	<1	<1
Life Span (Hr)	20000	20000	20000	20000
Suitable Motor	50 / 100W Servo	200 / 400W Servo	200 / 400W Servo	750W Servo
Weight (Kg)	1	2.5	4.6	13



GSN Series

GSN Series hollow rotary table combines with Cross Roller Bearing arrangement for over-hang, cantilever types of application.

Type	GSN60	GSN85	GSN130	GSN200
Gear Ratio	5/15/20/25	5/10/15/20/25/30/50	10/18/30/50/54/70/100	10/18/30/50/54/70/100
Torque (Nm)	5.2	3.2	20	50
Axial Load (N)	250	500	2000	4000
Repeatability (arc-sec)	±5	±5	±5	±5
Flatness (mm)	±0.005	±0.005	±0.005	±0.005
Concentricity (mm)	±0.01	±0.01	±0.01	±0.01
Accuracy (arc-sec)	±10	±10	±10	±10
Backlash (arc-min)	<1	<1	<1	<1
Life Span (Hr)	15000	20000	20000	20000
Suitable Motor	50 / 100W Servo	200 / 400W Servo	200 / 400W Servo	750W Servo
Weight (Kg)	1	1.2	2.5	8.2

Right Angle Hollow Rotary Table



Features

- Accurate Hypoid Gear Driven
- Higher Precision, Higher Torque
- Higher Reduction Ratio, Higher Inertia Control
- Ease to use with Servo Motor & Stepper Motor

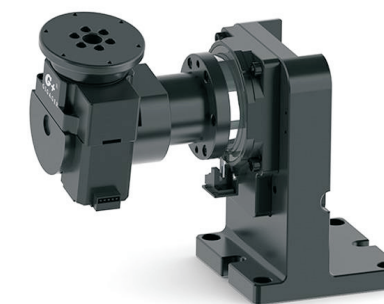
GSA Series

GSA Series is highly accurate right angle hollow rotary table series. It combines with hypoid gear with taper roller bearing

Type	GSA42	GSA90	GSA130	GSA200
Gear Ratio	3/15/21/30	3/5/21/30	3/15/21/30	5/15/20/25/50/100
Torque (Nm)	12	30	65	110
Axial Load (N)	100	300	1600	4000
Repeatability (arc-sec)	±10	±10	±10	±15
Flatness (mm)	±0.005	±0.005	±0.005	±0.005
Concentricity (mm)	±0.01	±0.01	±0.01	±0.01
Accuracy (arc-sec)	±10	±10	±10	±10
Backlash (arc-min)	<1	<1	<1	<1
Life Span (Hr)	30000	30000	30000	30000
Suitable Motor	50 / 100W Servo	200 / 400W Servo	200 / 400W Servo	750W Servo
Weight (Kg)	1	3	7.7	27

Other Products

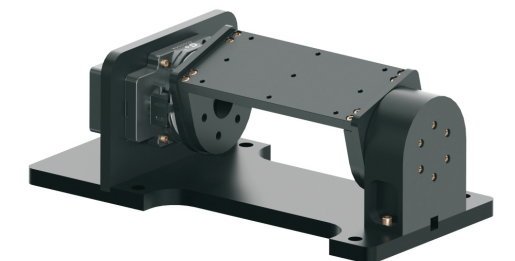
GMR Series



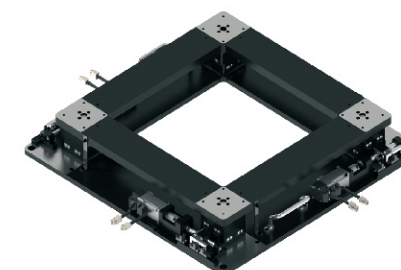
GMC Series



GML Series



XXY Microstage



XY Microstage



Harmonic Gearbox

